

TOPCOATS



RUBBERIZED COATINGS™

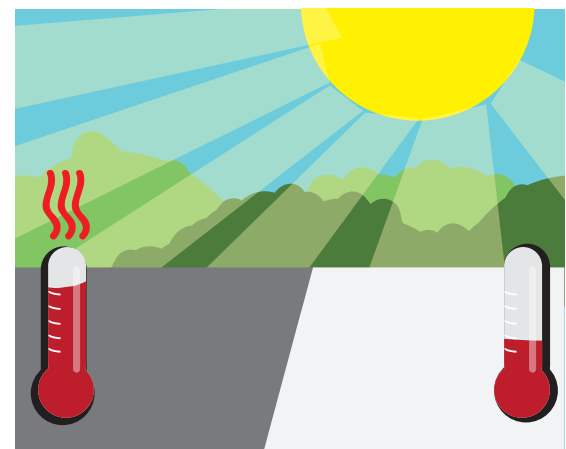
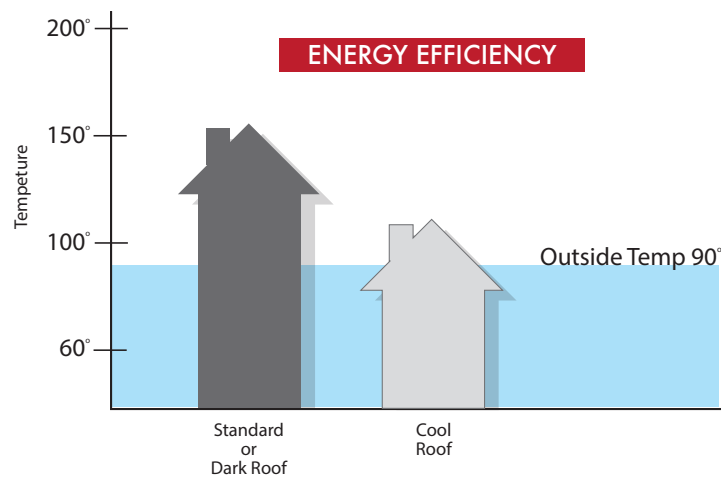
"THE" Products for Contractors & Homeowners

520-293-7000
www.rubberized.com

Why Cool Roof Coatings?

An explanation of the energy efficiency and cost savings this can provide.

Cool Roof Coatings are designed to reflect more sunlight and absorb less heat than a standard roof. Cool roofs can be made of a highly reflective type of paint, a sheet covering, or highly reflective tiles or shingles. Nearly any type of building can benefit from a cool roof. Standard or dark roofs can reach temperatures of 150°F or more in the summer sun. A cool roof under the same conditions could stay more than 50°F cooler and lowers the load placed on your air conditioning/cooling unit. In most cases, the energy savings may exceed the cost of materials many times over.



Cool roof coatings contain white or special reflective pigments that reflect sunlight. Tucson Rubberized Coatings products can protect the roof surface from ultra-violet (UV) light and chemical damage, and some offer water protection and restorative features.

Benefits of Cool Roofs

A cool roof can benefit a building and its occupants by:

- Reducing energy bills by decreasing air conditioning needs
- Improving indoor comfort for spaces that are not air conditioned, such as garages or covered patios
- Decreasing roof temperature, which may extend roof service life.

Beyond the building itself, cool roofs can also benefit the environment, especially when many buildings in a community have them. Cool roofs can:

- Reduce local air temperatures (sometimes referred to as the urban heat island effect)
- Lower peak electricity demand, which can help prevent power outages
- Reduce power plant emissions, including carbon dioxide, sulfur dioxide, nitrous oxides, and mercury, by reducing cooling energy use in buildings.

No 'ONE FITS ALL' Coating

The type of Coating you'll need will depend on several factors:

- **Climate** (temperature, humidity, weather, etc.)
- **Type of roof** (steep slope , low slope, flat, etc.)
- **Substrate** (existing coated surfaces, metal, asphalt based, wood, etc.)
- **Roof condition** (standing water, low spots, etc)

If you are not sure of all the factors to consider for your project, please call or stop by one of our stores and we will assist you with selecting the right product for your project needs.



Tucson Rubberized Coatings manufactures and sells high-quality Elastomeric Roof Coatings that meet the standards of Energy Star to help save on energy costs and are made with superior raw materials to ensure that our products can hold up in the most stringent conditions. TRC's Roof Coatings can be used throughout the year as they are designed to stretch and contract easily to adjust to our hot summer and cool winter temperatures. These coatings can work with almost any roof type and are produced in a variety of grades ranging from a 5 year, all the way up to a 15-year product.

TRC's Roof Coatings Provide:

- **A neat and uniform seamless coating**
- **Protection and sealing of the underlying roofing material**
- **Help to stop and prevent leaks**
- **Limit to future weathering**

520-293-7000
www.rubberized.com



Premium TRC Acrylic Coatings:

Acrylic Coatings are the most cost effective way to achieve the benefits of a cool roof coating and protect your roof surface.

Benefits of TRC Acrylic Coatings:

- Reduce energy costs
- Excellent adhesion
- Excellent water resistance
- Excellent elongation
- Designed for harsh weather conditions

TRC's Acrylic Coatings works extremely well on:

- Re-coats, metal roofs and properly primed surfaces
- On steep, low sloped roofs and roofs with minimal standing water

Try these TRC Acrylic products for your next project:



PRODUCT NO. 302

ENVIRO-COAT ROOF COATING FOR SLOPED OR FLAT ROOFS WITH NO STANDING WATER

- 100% acrylic with flexibility and reflectivity to protect the roof surface
- Reduces interior temperatures
- Reduces home cooling expenses
- (5-Year Limited Manufacturer's Warranty)



PRODUCT NO. 3000

FLEXA-COAT ROOF ACRYLIC ROOF COATING FOR MAXIMUM DIRT PICKUP RESISTANCE

- Maximum dirt pick up resistance
- Stays whiter and brighter longer
- Ideal for re-coats or primed substrated
- High reflectivity for great energy savings
- (8-Year Limited Manufacturer's Warranty)



PRODUCT NO. 6000

DURA-COAT™ ROOF COATING FOR ROOFS W/ MODERATE STANDING WATER

- An ultra white acrylic roof coating that forms a thick rubber-like shield
- Expands and contracts over 220% to prevent roof damage
- Resists cracking, peeling and mildew
- Offers unbeatable weatherproof protection due to its maximum resistance to ponded water conditions and high reflectivity
- (10-Year Limited Manufacturer's Warranty)



Premium TRC Siliconized Coatings

Using TRC's Siliconized Coatings will let you go longer between re-coats, get better energy savings, and extend the life of your roof.

Benefits of TRC Siliconized Coatings verses Traditional Coatings:

- **Better elongation**
- **Better adhesion**
- **Better water resistance**
- **Better crack/gap bridging**
- **Holds up very well in areas that hold water**
- **Designed for the harshest weather conditions**

TRC's Siliconized Coatings works extremely well on:

- **Re-coats and over properly primed surfaces**
- **On steep, low slope or flat roofs**

Use TRC'S Siliconized product line for your next project:



PRODUCT NO. 6500

SIL-COAT™ ROOF COATING FOR ROOFS W/ EXTREME STANDING WATER

- **Siliconized version of PRODUCT NO. 6000**
- **Achieves maximum values in elongation, elasticity, water resistance, adhesion as well as reflectivity**
- **Application can be used where other products would not hold up**
- **(10-Year Limited Manufacturer's Warranty)**

520-293-7000
www.rubberized.com



Siliconized vs 100% Silicone

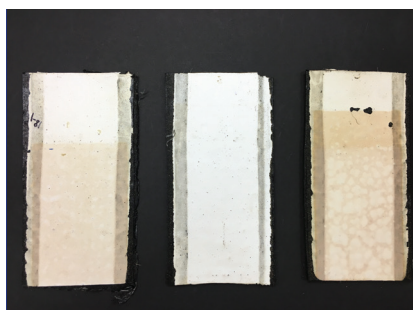
TRC's Siliconized Coatings are a Silicone modified 100% Acrylic Coating. They differ from 100% Silicone Coating in several key ways:

TRC'S Siliconized Coatings

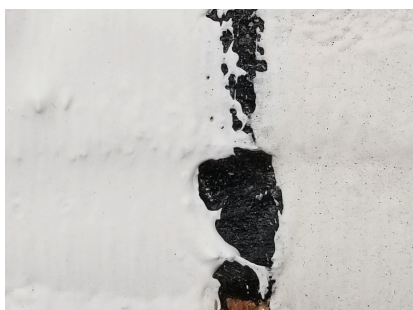
- Can be recoated or repaired in the future



- Stays whiter longer



- Has the highest resistance to dirt pick up



100% Silicone Coatings

- Can't be recoated or repaired in the future

- Very soft coatings which makes it susceptible to dirt pick up

- What is white today may be yellow or tan tomorrow

520-293-7000
www.rubberized.com



'Best of Both Worlds' PRODUCT NO. 7000

WITH BLEED BLOCK TECHNOLOGY TO STAY WHITER LONGER



- An acrylic polymer elastomeric roof coating
- Ultra white that remains white longer
- Extreme adhesion, strength, and elasticity to resist cracking and peeling
- Maximum bleed block technology with no yellowing or staining over all tested substrates
- (12-Year Limited Manufacturer's Warranty[†])

Substrates successfully tested on:

- Bitumen Roofing • Hot Asphalt • Rolled Roofing • Modified Paper • Plywood • Gravel • Aluminum
- Asphalt Emulsion • Oil Based Adhesive • Deteriorated Acrylic Roof Coating

When traditional white roof coatings are applied over non-white roofing materials, like asphalt and aluminum-based products, they will typically bleed through turning a yellow or almond color. This can greatly reduce the reflectivity of the coating, and negatively affect the adhesion.

PRODUCT NO. 7000 does not yellow and will adhere to even the toughest surfaces. It has also seen extensive lab testing with accelerated Tucson weather simulations on a variety of substrates with successful results.

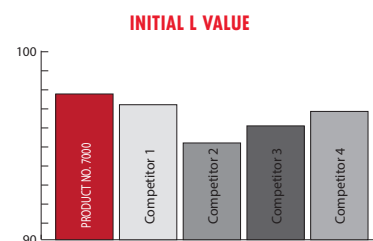
With **PRODUCT NO. 7000's** state of art self-priming properties, the emulsion is no longer required for most applications. This could potentially save a significant amount of project time but still allows roofers to cover any surface without jeopardizing the integrity of the project. **PRODUCT NO. 7000** is also an ideal product for re-coating a roof. The same properties that allow this roof coating to cover and adhere to the toughest surfaces, also make this product the premium general roof coating on the market.



BEFORE PRODUCT NO. 7000

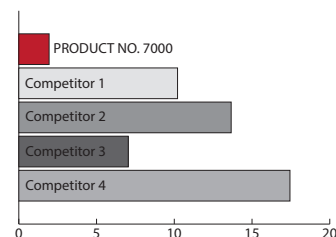


**AFTER 2 COATS OF PRODUCT NO. 7000
(NO PRIMER)**



INITIAL L VALUE 1.00 IS DEFINED AS A PERFECT WHITE. THE HIGHER THE VALUE THE GREATER THE REFLECTIVITY.

PRODUCT NO. 7000 HAS THE HIGHEST INITIAL L VALUE.



DELTA E VALUE REPRESENTS THE CHANGE IN COLOR FROM THE INITIAL COLOR. THE LARGER THE NUMBER THE WORSE THE BLEED THROUGH.

PRODUCT NO. 7000 HAS THE LOWEST DELTA E VALUE.

[†]TUCSON RUBBERIZED COATINGS warrants PRODUCT NO. 7000 for 12-years when applied within the proper guidelines. See Warranty for details.



Ultra Durable PRODUCT NO. 10000

THE LONGEST LASTING AND MOST ENERGY EFFICIENT ELASTOMERIC COATING AVAILABLE!



- A 100% acrylic polymer elastomeric roof coating
- Over 450% elongation with high tensile strength
- Maintains high elongation even after years of UV exposure
- Unmatched weather, hail and UV resistance
- Best-in-Class brightness and reflectivity
- Best-in-Class hiding power means less coating to cover the substrate versus competitors
- ASTM D6083 and California Title 24 compliant
- (15-Year Limited Manufacturer's Warranty[†])

Substrates successfully tested on:

• Bitumen Roofing • Hot Asphalt • Rolled Roofing • Modified Paper • Plywood • Gravel • Aluminum
• Asphalt Emulsion • Oil Based Adhesive • Deteriorated Acrylic Roof Coating

Typically, water-based acrylic coating begins to deteriorate when exposed to UV rays. They will lose their elongation and flexibility and may begin to chalk off as the weathering process continues. The better a coating ages, the longer the life, protection, and energy savings they provide.

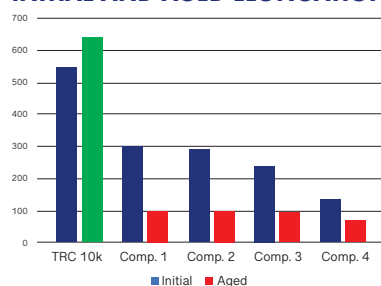
PRODUCT NO. 10000 contains state-of-the-art advanced weathering technology to maximize the lifespan of the coating by ensuring there is no loss of physical properties when exposed to the tough UV rays of the Southwest climate

With this technology, Product No. 10000 is unmatched in durability and protection. Extreme weather, hail and UV resistance means you can feel confident your roof is prepared for whatever mother nature brings your way.

PRODUCT NO. 10000 has also seen extensive lab testing with accelerated Tucson weather simulations on a variety of substrates with successful results.



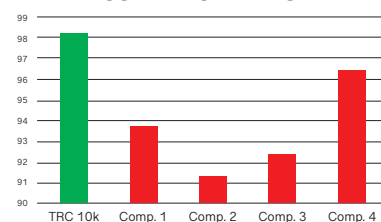
INITIAL AND AGED ELONGATION



TRC 10000 HAD THE HIGHEST INITIAL ELONGATED TESTED

TRC 10000 WAS THE ONLY COATING TO MAINTAIN ELONGATION AFTER EXTENSIVE UV EXPOSURE

CONTRAST RATIO



Contrast ratio is the amount of a black surface the white coating covered with one coat. The higher the ratio, the less coating you need to completely cover a substrate.

PRODUCT NO. 10000 HAS THE HIGHEST CONTRAST RATIO.

[†]TUCSON RUBBERIZED COATINGS warrants PRODUCT NO. 10000 for 15-years when applied within the proper guidelines. See Warranty for details.



Premium Primers

Premium TRC primers are used to not only repair the substrate for top coatings but also to seal and protect the roof substrate.



PRODUCT NO. 295-G

STAIN SHIELD ACRYLIC PRIMER-FABRIC SATURANT WITH BLEED BLOCK TECHNOLOGY

- Recommended for priming over asphalt based surfaces as well as concrete, metal, and aged roof coatings to prevent bleed through to the top coating
- A penetrating sealer designed to provide a firm surface for application of wall coatings
- Can be used to install polyester for complete roofing system



PRODUCT NO. 297-X

X-TREME ACRYLIC PRIMER FOR ULTIMATE ADHESION

- Xtreme Adhesion primer for variety of substrates including new and aged EPDM, TPO, and Polyurethane Foam
- Up to triple adhesion of top coatings when applied over 297-X compared to unprimed substrates
- Ideal to install polyester fabric for complete roofing system

520-293-7000
www.rubberized.com

Substrate Guide

ROOF SURFACE	PREPARATION & CLEANING	REINFORCEMENT & REPAIR	SURFACE PRIMING	PROTECTIVE COATING
ASPHALT BUILT-UP ROOF MODIFIED BITUMEN	<ul style="list-style-type: none"> Roof system must be cleaned of all contaminants that would impede proper adhesion and completely dry prior to application of any TRC products For best results, thoroughly wash with an environmentally friendly cleaning agent and water or power wash Roof surface temperature should be below 120°F at time of application All underlying materials must be fully cured 	<ul style="list-style-type: none"> Address ponding areas to ensure proper water drainage Seal all cracks, seams and roof penetrations with TRC 510 and polyester fabric Reinforce valleys, low areas and drains/scuppers with TRC 510 and polyester fabric as needed 	<ul style="list-style-type: none"> For best results, apply one coat of TRC 295-G to minimize asphalt bleed through or one coat of TRC 297-X to obtain maximum adhesion of topcoat 	<ul style="list-style-type: none"> Apply 2-3 coats of desired topcoat at recommended application rates A minimum of two coats at approved coverage rates is required to qualify for the Limited Product Warranty. <ul style="list-style-type: none"> *TRC 10000 (Highly Recommended) *TRC 7000 (Highly Recommended) *TRC 6000 (Recommended) *TRC 3000 (Recommended)
SPRAY POLYURETHANE FOAM	<ul style="list-style-type: none"> Spot clean and repair foam as needed prior to washing the entire roof system; when repairs are complete, roof system must be cleaned of all contaminants that would impede proper adhesion and completely dry prior to application of any TRC products For best results, thoroughly wash with an environmentally friendly cleaning agent and water It is not recommended to power wash a SPF roof system Roof surface temperature should be below 120°F at time of application All underlying materials must be fully cured 	<ul style="list-style-type: none"> Address ponding areas to ensure proper water drainage Seal all cracks, seams and roof penetrations with TRC 510 and polyester fabric Reinforce valleys, low areas and drains/scuppers with TRC 510 and polyester fabric as needed 	<ul style="list-style-type: none"> Apply one coat of TRC 297-X for maximum adhesion When using TRC 10000 or TRC 6000, priming is not required but recommended TRC 297-X must be applied prior to applying TRC 7000 or TRC 3000 	<ul style="list-style-type: none"> Apply 2-3 coats of desired topcoat at recommended application rates A minimum of two coats at approved coverage rates is required to qualify for the Limited Product Warranty <ul style="list-style-type: none"> *TRC 10000 (Highly Recommended) *TRC 6000 (Highly Recommended) *TRC 7000 (Recommended) *TRC 3000 (Recommended)
TPO (THERMO-PLASTIC OLEFIN) PVC (POLYVINYL CHLORIDE) EPDM (ETHYLENE PROPYLENE DIENE MONOMER)	<ul style="list-style-type: none"> Roof system must be cleaned of all contaminants that would impede proper adhesion and completely dry prior to application of any TRC products For best results, thoroughly wash with an environmentally friendly cleaning agent and water or power wash Roof surface temperature should be below 120°F at time of application All underlying material must be fully cured 	<ul style="list-style-type: none"> Must apply one coat of TRC 297-X prior to repairing or coating single-ply roof system substrates Address ponding areas to ensure proper water drainage Seal all cracks, seams and roof penetrations with TRC 510 and polyester fabric Reinforce valleys, low areas and drains/scuppers with TRC 510 and polyester fabric as needed 	<ul style="list-style-type: none"> Must apply one coat of TRC 297-X prior to application of TRC products 	<ul style="list-style-type: none"> Apply 2-3 Coats as desired topcoat at recommended application rates A minimum of two coats at approved coverage rates is required to qualify for the Limited Product Warranty <ul style="list-style-type: none"> *TRC 10000 (Highly Recommended) *TRC 7000 (Recommended) *TRC 6000 (Recommended) *TRC 3000 (Recommended)
METAL ROOFING	<ul style="list-style-type: none"> Roof system must be cleaned of all contaminants that would impede proper adhesion and completely dry prior to application of any TRC products For best results, thoroughly wash with an environmentally friendly cleaning agent and water or power wash Roof surface temperature should be below 120°F at time of application All underlying material must be fully cured All metal panels must be rust-free and structurally sound 	<ul style="list-style-type: none"> Address ponding areas to ensure proper water drainage Completely cover all bolt and screw heads with TRC 510 Seal all cracks, seams and roof penetrations with TRC 510 and polyester fabric Reinforce valleys, low areas and drains/scuppers with TRC 510 and polyester fabric as needed 	<ul style="list-style-type: none"> Apply one coat of TRC 295-G over any rusted areas Apply one coat of TRC 295-G to minimize bleed-through Apply one coat of TRC 297-X to obtain maximum adhesion of topcoat 	<ul style="list-style-type: none"> Apply 2-3 coats of desired topcoat at recommended application rates A minimum of two coats at approved coverage rates is required to qualify for the Limited Product Warranty <ul style="list-style-type: none"> *TRC 10000 (Highly Recommended) *TRC 7000 (Highly Recommended) *TRC 6000 (Recommended) *TRC 3000 (Recommended)
ALUMINUM ROOF COATING	<ul style="list-style-type: none"> Roof system must be cleaned of all contaminants that would impede proper adhesion and completely dry prior to application of any TRC products For best results, thoroughly wash with an environmentally friendly cleaning agent and water or power wash Roof surface temperature should be below 120°F at time of application Substrate must be free of flaking or peeling aluminum All underlying materials must be fully cured 	<ul style="list-style-type: none"> Address ponding areas to ensure proper water drainage Seal all cracks, seams and roof penetrations with TRC 510 and polyester fabric Reinforce valleys, low areas and drains/scuppers with TRC 510 and polyester fabric as needed 	<ul style="list-style-type: none"> Apply one coat of TRC 295-G to minimize bleed-through or one coat of TRC 297-X to obtain maximum adhesion of topcoat 	<ul style="list-style-type: none"> Apply 2-3 coats of desired topcoat at recommended application rates A minimum of two coats at approved coverage rates is required to qualify for the Limited Product Warranty <ul style="list-style-type: none"> *TRC 10000 (Highly Recommended) *TRC 7000 (Highly Recommended) *TRC 6000 (Recommended) *TRC 3000 (Recommended)



Who We Are & What We Do

Tucson Rubberized Coatings is on the cutting edge of technological advancement in the coating industry. From driveways to walls and rooftops, we have you covered. Established in 1992, we have decades of research that has led us to not only create the best products of today but has also been the foresight in the formulation for the products of tomorrow.

For new roofs, restoring older roofs, or protecting an existing roof, the right product is essential. Tucson Rubberized Coatings is committed to designing, formulating and manufacturing these products for you whether you are a Contractor, Building Owner, or Home Owner. We are leaders in the industry with unmatched customer service. With our dedication to our products, you will have the confidence that Tucson Rubberized Coatings will be there with you to complete all of your project needs.

OUR OTHER PRODUCTS

ROOFING

- Patching
- Puddle Filler
- Sloped Roof Coatings
- Flat Roof Coatings
- Siliconized Roof Coatings

WALLS

- Water Sealer
- Rubberized Stucco Coating
- Rubberized Wall Coating

DRIVEWAYS/PARKING LOTS

- Sealer
- Crack Filler

3 CONVENIENT LOCATIONS

WETMORE & FLOWING WELLS

1430 W Wetmore Rd.
Tucson, AZ 85705

520-573-6300

TUCSON BLVD. & VALENCIA

6351 S. Tucson Blvd.
Tucson, AZ 85706

520-293-7000

29TH ST. & CRAYCROFT

5355 E. 29th St.
Tucson, AZ 85711

520-790-6600

STORE HOURS

MONDAY-FRIDAY: 8AM TO 5PM

SATURDAY: 8AM TO 3PM

CLOSED SUNDAY

www.rubberized.com

MORE INFORMATION IS AVAILABLE AT
WWW.RUBBERIZED.COM



"THE" Products for Contractors & Homeowners

PLEASE CALL US WITH QUESTIONS
520-293-7000